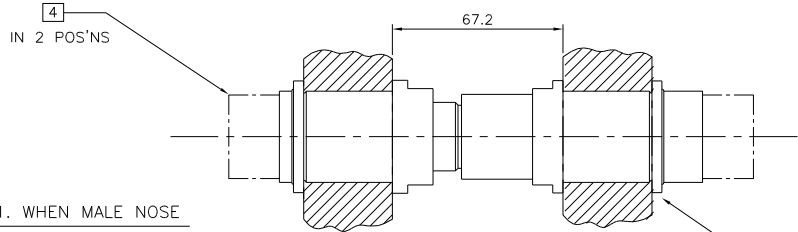
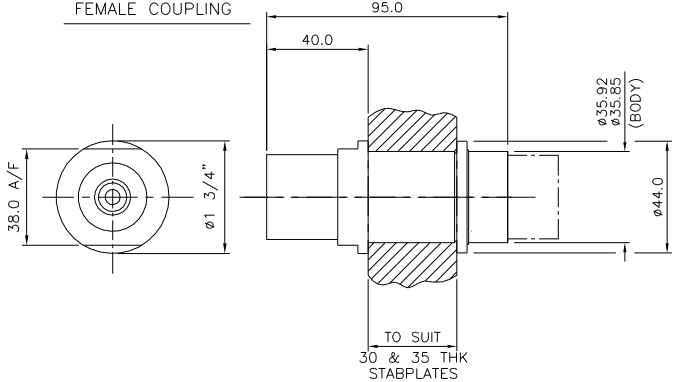
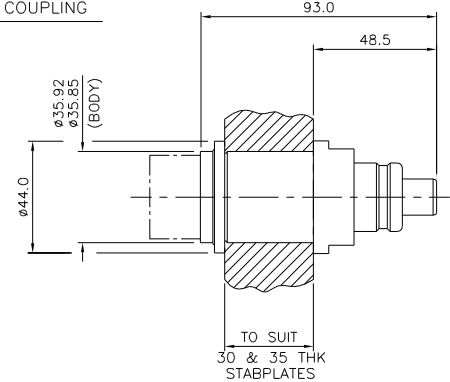


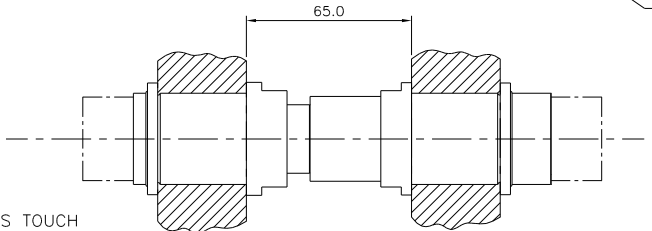
**MALE COUPLING**

**FEMALE COUPLING**

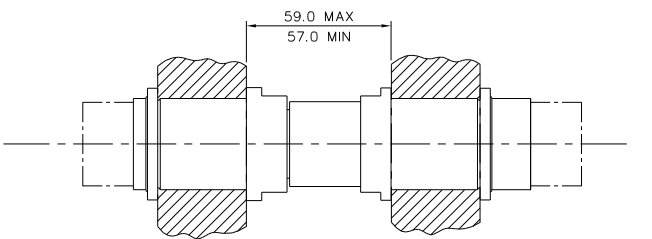


1. WHEN MALE NOSE ENTERS FIRST SEAL

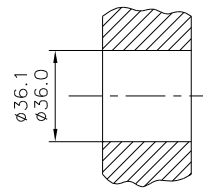
CLAMP WASHER & RETAINING CLIP SUPPLIED WITH COUPLING



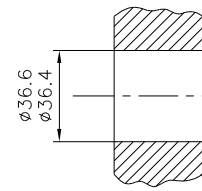
2. WHEN POPPETS TOUCH



3. FULLY MATED



FIXED COUPLING STABPLATE INTERFACE



FLOATING COUPLING STABPLATE INTERFACE

**NOTES :**

1. MAX WORKING PRESSURES :-  
 L.P. 569 BAR (8250psi)  
 H.P. 1190 BAR (17250psi)
2. MATERIALS :-  
 L.P. STAINLESS STEEL 316S11 (318N/mm<sup>2</sup> YIELD STRENGTH AT 0.2% PROOF)  
 H.P. MALE BODY - NITRONIC 50(HS) (740N/mm<sup>2</sup> YIELD STRENGTH AT 0.2% PROOF)  
 H.P. FEMALE BODY - NITRONIC 60 (378N/mm<sup>2</sup> YIELD STRENGTH AT 0.2% PROOF)
3. BREAK OUT FORCE PER 1000 METRE DEPTH = 1.7KN
4. ALL BACK FITTINGS TO BE SPECIFIED BY CLIENT
5. NOMINAL BORE SIZE - 3/8" (9.52mm)
6. CV - 1.9 MAX DEPENDANT ON END FITTING  
 (© FULL MAKE-UP OR BACKED OFF BY 2mm)
7. SEPARATION FORCE (NEWTONS) = 160 x LINE PRESSURE (N/mm<sup>2</sup>) i.e. @ 690 BAR = 11.14KN
8. POPPET SPRING FORCE - STD 71 N (D09307A)  
 HIGH LOAD 220 N (D043594A)
9. EXTERNAL INGRESS PRESSURE - STD SPRING 7 bar  
 H.LOAD SPRING 22 bar
10. DEAD VOLUME (SPILL/BREAK) = 1.0cc
11. TYPICAL MALE COUPLING A004700A (LP)  
 TYPICAL FEMALE COUPLING A004800A (LP)  
 TYPICAL MALE COUPLING 11-KS0646-00 (HP)  
 TYPICAL FEMALE COUPLING 11-KS0647-00 (HP)
12. ALL DIMENSIONS SHOWN ARE NOMINAL

|   |                             |   |                    |                      |                 |
|---|-----------------------------|---|--------------------|----------------------|-----------------|
| ECN1758 ISSUED FOR INFORMATION ONLY   | E                           | AS  | 07.01.03           |                      |                 |
| CN1001 ISSUED FOR INFORMATION ONLY  | D                           | TRR   | 31.01.00           | TPB                  | 31.01.00        |
| CN00146 ISSUED FOR INFORMATION ONLY   | C                           | MDP   | 24.04.97           | TPB                  | 25.04.97        |
| ISSUED FOR INFORMATION ONLY   | B                           | CJ  | 17.06.96           | TPB                  | 17.06.96        |
| ISSUED FOR INFORMATION ONLY   | A                           | CJ  | 09.05.96           | TPB                  | 09.05.96        |
| ISSUE DETAILS   |                             | REV   | DWN                | DATE                 | CKD             |
|   |                             | DATE  | DATE               | ENGAPPR              | DATE FOR CONSTR |
| © 2003 THIS DOCUMENT CONTAINS INFORMATION PROPRIETARY TO SUBSEA COMPONENTS AND SHALL NOT BE REPRODUCED OR TRANSMITTED TO OTHER DOCUMENTS OR DISCLOSED TO OTHERS OR USED FOR ANY PURPOSE OTHER THAN THAT FOR WHICH IT IS FURNISHED WITHOUT THE PRIOR WRITTEN PERMISSION OF SUBSEA COMPONENTS |                             | SubseaC components  |                    |                      |                 |
|   |                             | UNIT 59 CLEVELAND ROAD<br>CORDWALLS INDUSTRIAL ESTATE<br>MADENHEAD, BERKSHIRE, SL6 7BZ<br>TEL:+44 (0)1628 525640<br>FAX:+44 (0)1628 776083/781569 |                    |                      |                 |
| TOLERANCES U.O.S.   | MATERIAL                    | TITLE   |                    |                      |                 |
|   | FINISH                      | INTERFACE DRG FOR   |                    |                      |                 |
|   |                             | 3/8" NB "REDUCED FORCE"   |                    |                      |                 |
|   |                             | HYDRAULIC COUPLING  |                    |                      |                 |
| ESTIMATED WEIGHT  | SIZE                        | DRAWING No.   |                    |                      |                 |
| kg  |                             | H003602A  |                    |                      |                 |
| ASSD ON   | ALL DIMENSIONS IN mm U.O.S. | A1  | ORIGINAL SCALE 1:1 | DO NOT SCALE DRAWING | SHEET 1 OF 1    |