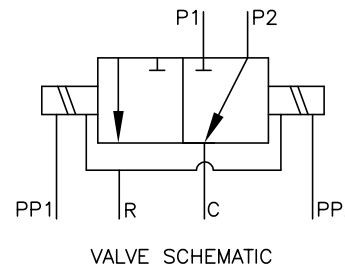


WIRING SCHEMATIC FOR EACH DUAL COIL SOLENOID



VALVE SCHEMATIC

TECHNICAL SPECIFICATION :

ALL TEST PARAMETERS ACHIEVED USING STANDARD SUBSEA COMPONENTS TEST EQUIPEMENT.

MAIN SUPPLY PRESSURE
 MAX WORKING PRESSURE (bar) : 1034 bar (15000 psi)
 PROOF PRESSURE (bar) : 1552 bar (22500 psi)

PILOT SUPPLY PRESSURE
 MAX WORKING PRESSURE (bar) : 379 bar (5500 psi)
 MIN WORKING PRESSURE (bar) : 100 bar (1450 psi)
 PROOF PRESSURE (bar) : 569 bar (8250 psi)

RETURN LINE PRESSURE
 MAX ABSOLUTE PRESSURE : 517 bar (7500 psi)
 RETURN PROOF (TEST) : 300 bar (4350 psi)

FLOW CHARACTERISTICS
 Cv FOR FLOW FROM 'F' TO 'P1' : 0.4
 Cv FOR FLOW FROM 'F' TO 'P2' : 0.4
 INTERFLOW BETWEEN P1 AND P2 WILL OCCUR WHEN SWITCHED
 MAX ACCEPTABLE LEAKAGE : 0.15cc / min

PILOT SOLENOID INFORMATION
 MAX VOLTAGE : 30
 MIN VOLTAGE : 18
 COIL RESISTANCE AT 16°C : 59-61 Ohms
 NOMINAL POWER CONSUMPTION : 9.6 Watts
 INSULATION RESISTANCE : >20 MEGA OHMS
 TYPICAL PULSE DURATION : 10 SECONDS

PRESSURE SENSOR DETAILS
 SENSOR MANUFACTURER : N/A
 SENSOR Pt No. : N/A
 MAXIMUM SENSOR PRESSURE : N/A

VALVE DOCUMENT INFORMATION
 VALVE GA DRAWING No. : 11-KS0594-01
 QUALIFICATION REPORT No. : 60-KS0006-29
 F.A.T. DOC No. : 23-KC0630-07

GENERAL INFORMATION :
 MAX DEPTH PRESSURE : 3000m
 TEMPERATURE RANGE : -10°C TO 60°C
 VALVE WEIGHT : 7.0 Kg
 FIXING BOLT TORQUE : 110 Nm

THIS VALVE IS TO BE USED IN SYSTEMS WHERE PILOT PRESSURE IS SUPPLIED INDEPENDENTLY OF MAIN SUPPLY PRESSURE.

INTERFACE SEA WATER TOLERANT SWITCHOVER VALVE (M.W.P 1034 bar)