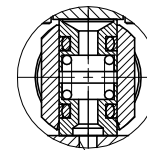
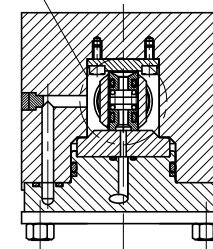


SECTION 'A-A'



SCALE 2:1



SECTION 'B-B'  
VIEW BEYOND OMITTED

GA - SEA WATER TOLERANT  
MILLION CYCLE, SPRING RETURN VALVE  
(NORMALLY CLOSED) 24V DUAL COIL,  
379 BAR MWP WITH Px